

# IACUC Update

Institutional Animal Care and Use Committee  
The University of Texas at Austin

September 2012

Volume 6, Issue 1

## Reporting Animal Care Concerns: “Whistle-Blower Policy”

Any person who has concerns regarding any aspect of the care and use of animals in research, teaching or testing at The University of Texas at Austin is encouraged to voice that concern.

Concerns about animal care and use should be reported to the Attending Veterinarian, the Institutional Animal Care and Use Committee, or University Compliance Services. The names and phone numbers of these contact points should be posted in animal facilities and laboratories.

Attached to this newsletter is a poster that contains this information and should be posted in animal facilities (including labs).

## Research Safety Day

Environmental Health & Safety presents Research Safety Day. Pizza, refreshments, vendors, prizes, and presentations!

Date: **Wednesday, September 26, 2012**

Time: **10:00 a.m. – 3:00 p.m.**

Location: **NHB 1.720**

For more information, please see the attached flier.

## Semi-Annual Lab Evaluations: Coming Soon

The semi-annual evaluations of all the University’s animal facilities will occur from **October 1 – October 17, 2012**. This process involves an examination of all areas where animals are used and housed for experiments.

- ✓ An evaluation schedule is attached.
- ✓ Prepare for the visit by using the “Laboratory Self-Evaluation Checklist” on the “Documents, Materials, and Forms” page of the IACUC website.

## Revised IACUC Guidelines

Guideline # 003 entitled “Guidelines for the Use of Carbon Dioxide for Rodent Euthanasia” and Guideline # 004 entitled “Guidelines for the Use of Cervical Dislocation for Rodent Euthanasia” have recently been revised. The revisions include:

- Clarification regarding the use of cervical dislocation in neonates (before eleven days of age). Decapitation is the recommended replacement technique for rodents during this age period.
- The use of a plastic bag for prolonged gassing of neonatal rodents is no longer allowed.

The revised guidelines will be phased-in with existing protocols over the next year as revisions and renewals are submitted and reviewed by the Committee.

## New IACUC Guideline



The IACUC has issued a new guidance document (Guideline # 017) entitled “**Guidelines for the Social Housing and Environmental Enrichment of Laboratory Mice and Rats.**” The guideline provides information regarding the social housing and environmental enrichment of laboratory mice and rats used for research, teaching, or other purposes at the University.

The new guideline is posted under the “Policies, Procedures, and Guidelines” page of the IACUC website.

Please continue to watch your email for further information on how this guideline will be implemented across the campus.

The next IACUC Full Committee Review (FCR) is **October 15, 2012.**

The deadline to submit materials for review is **September 20, 2012.**

Animal Welfare Assurance  
**A4107-01**

AAALAC Accredited Since  
**October 29, 2001**

Please contact the Office of Research Support with any questions, comments, or concerns.  
voice: 512.475.8650 | web: <http://www.utexas.edu/IACUC> | email: [IACUC@austin.utexas.edu](mailto:IACUC@austin.utexas.edu)



## How to **report concerns** about animal use in research, teaching, or testing.

It is the policy of The University of Texas at Austin that the best possible care be given to ALL animals used for research, teaching, and testing.

The Institutional Animal Care and Use Committee (IACUC) is obligated to investigate concerns regarding the care and treatment of animals used in research, teaching, or testing at The University of Texas at Austin.

Concerns about animal care and use should be reported to one of the following:

### **Attending Veterinarian**

(512) 471-2392 or [gotto@austin.utexas.edu](mailto:gotto@austin.utexas.edu)

### **Institutional Animal Care and Use Committee**

(512) 475-8650 or [iacuc@austin.utexas.edu](mailto:iacuc@austin.utexas.edu)

### **University Compliance Services**

Report anonymously at [www.reportlineweb.com/utaustin](http://www.reportlineweb.com/utaustin),  
or anonymously by telephone at (877) 507-7321

Individual(s) reporting concerns do not have to identify themselves, and the University will, to the maximum extent possible, protect the privacy of those who report concerns. The policy of the University is to prohibit unlawful retaliation against employees as a consequence of good faith actions in the reporting of, or the participation in an investigation pertaining to, allegations of wrongdoing.

Questions about animal bites, scratches, other exposures or allergies? Work-related injuries? Recombinant DNA (rDNA) exposure or biohazard risks?

## **HealthPoint**

*Balance & Well-Being in Work & Life*

Occupational Health Program

Office: **NOA 3.302**

Hours: **Monday through Friday**

**8:00 a.m. to 5:00 p.m. (closed noon to 1:00 p.m.)**

Phone: **(512) 471-4OHP (4647)**

Fax: **(512) 471-2666**

Email: [HealthPoint.OHP@austin.utexas.edu](mailto:HealthPoint.OHP@austin.utexas.edu)

Web: <http://www.utexas.edu/hr/current/services/ohp.html>

After hours consultation with an OHP nurse is available by calling the main number. Emergency or after hours urgent care is provided by St. David's affiliated emergency rooms.

Questions about drug/chemical storage and/or disposal?  
Spills, splashes, lab accidents? Controlled substances?  
Sharps? Biohazards? Carcass disposal?



## **Environmental Health & Safety**

Office: **SER 210C**

Phone: **(512) 471-3511**

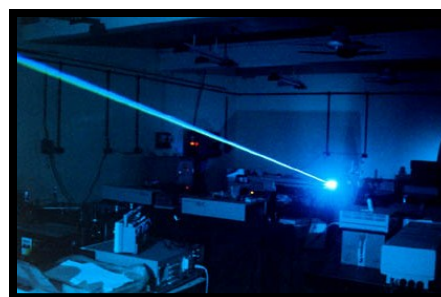
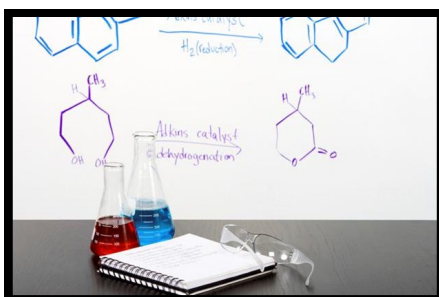
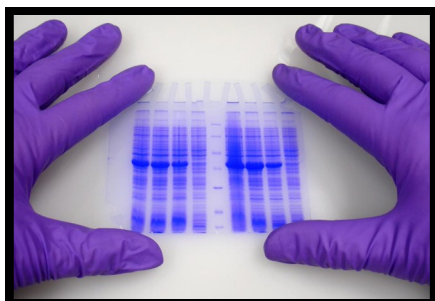
Fax: **(512) 471-6918**

Email: [ehs-labstaff@austin.utexas.edu](mailto:ehs-labstaff@austin.utexas.edu)

Web: <http://www.utexas.edu/safety/ehs/lab/>

Environmental Health and Safety presents

# RESEARCH SAFETY DAY



**Wednesday, September 26, 2012**

**10:00am to 3:00pm**

**NHB 1.720**

**Pizza and refreshments**

**Vendors**

**Prizes!**

**Presentations include:**

- Gas and Cryogen Safety
- Lessons Learned from Lab Accidents
- Lab Refrigerator Safety
- Starting a Safety Committee
- Proper Chemical Labeling
- Green Labs
- Occupational Health

For more information go to: <http://www.utexas.edu/safety/ehs/>



**Office of the  
Vice President  
for Research**

OFFICE OF THE VICE PRESIDENT FOR  
**UNIVERSITY OPERATIONS**

THE UNIVERSITY OF TEXAS AT AUSTIN



INSTITUTIONAL ANIMAL CARE AND USE COMMITTEE

THE UNIVERSITY OF TEXAS AT AUSTIN

---

*Peter T. Flawn Academic Center (FAC), Suite 426 • P.O. Box 7426 • Austin, Texas 78713-7426  
(512) 471-8871 • FAX (512) 471-8873 • Mail Code: A3200*

---

TO: **All Principal Investigators and Laboratory Personnel**  
FROM: **Institutional Animal Care and Use Committee**  
DATE: **September 11, 2012**  
SUBJECT: **Notice of Semi-Annual Animal Facility Evaluations**

The Institutional Animal Care and Use Committee (IACUC) will conduct the fall facility evaluations the from **October 1, 2012 through October 18, 2012**. This process involves an examination of all areas where animals are used and housed for experiments. The "Laboratory Self-Evaluation Checklist" should be used to facilitate your laboratory preparation for the facility evaluations and is a good resource to keep your laboratory in tip-top shape.

Please post the name(s) and best contact method (e.g., lab phone, cell phone, etc.) of a knowledgeable person that will be present and able to answer questions during the laboratory visits.

**Fall Semi-Annual Facility Evaluation Schedule**

(dates and times subject to change)

|  |  |
|--|--|
| <b>Monday, October 1, 2012</b><br>9:00 – 11:00 a.m.<br>ARC Annex, vehicle(s)             | <b>Monday, October 8, 2012</b><br>9:00 – 11:00 a.m.<br>ARC General Facilities, Floor 1 |
| <b>Monday, October 1, 2012</b><br>1:00 – 3:00 p.m.<br>NHB                                | <b>Monday, October 8, 2012</b><br>1:00 – 3:00 p.m.<br>DPRI                             |
| <b>Tuesday, October 2, 2012</b><br>9:00 – 11:00 a.m.<br>PAT Basement, Floor 1, 2, 3      | <b>Tuesday, October 9, 2012</b><br>1:30 – 3:30 p.m.<br>ECJ                             |
| <b>Tuesday, October 2, 2012</b><br>1:00 – 3:00 p.m.<br>BEL, PAT Floor 4, 5, 6            | <b>Wednesday, October 10, 2012</b><br>9:00 – 11:00 a.m.<br>ARC Floor 2, ARC Floor 3    |
| <b>Wednesday, October 3, 2012</b><br>9:30 – 11:00 a.m.<br>Pickle Research Campus         | <b>Wednesday, October 10, 2012</b><br>1:00 – 3:00 p.m.<br>BME, PAI, SEA                |
| <b>Wednesday, October 3, 2012</b><br>1:00 – 3:00 p.m.<br>Brackenridge Field Laboratories | <b>Thursday, October 11, 2012</b><br>9:00 – 11:00 a.m.<br>MBB, NMS, PHR                |
|  | <b>Wednesday, October 17, 2012</b><br>1:00 – 3:00 p.m.<br>Marine Science Institute     |

Please contact the Office of Research Support with any questions, comments, or concerns.  
voice: **512.475.8650** | web: <http://www.utexas.edu/iacuc> | email: [IACUC@austin.utexas.edu](mailto:IACUC@austin.utexas.edu)